

TECHNICAL NOTE

DATE : August 16, 1996
 SUB : SPECTRUM OF RELEASED SYN1 SYSTEM
 BY : VENKATASUBRAMANI. T. L.

NCRA LIBRARY



R00121

1.0 Introduction:

The SYN1 system is being released from NCRA, Pune for commissioning at Khodad after extensive tests. This note lists the performance specifications and gives the spectrum at "VIF"s (Very Important Frequencies) which are of prime importance to GMRT.

2.0 Performance limits for SYN1 acceptance:

After detailed discussions in various fora, the following specifications have been set as the target for acceptance and release of SYN1 system from Pune to Khodad.

Harmonics : Better than -20 dBc.
 Spurious : Better than -60 dBc
 Phase noise : Better than -60 dBc/ Hz at typically 10 kHz offset, which corresponds to a peak-to-peak phase jitter of better than about 0.1 degrees, in time scales of 0.1 mSec.
 50 Hz modulation : Better than -25 dBc
 Lock range : Guaranteed at VIF; Also from $\sim 1.2 \times F_{min}$ to $0.9 \times F_{max}$ of the VCOs.

3.0 VIFs of GMRT:

The Very Important Frequencies of GMRT where the print-out of the spectrum analyser screen is taken prior to release are:

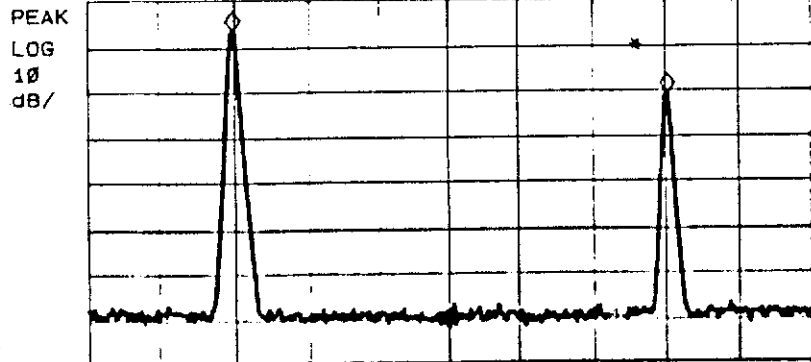
VCO 1: (a) 120 Mhz (b) 150 Mhz (c) 180 Mhz
 VCO 2: (d) 220 Mhz (e) 255 Mhz (f) 305 Mhz (g) 395 Mhz
 VCO 3: (h) 350 Mhz (I) 540 Mhz and (j) 600 Mhz.

The outputs for a typical system at the above VIFs is enclosed to this note.

4.0 Field Validation:

Validation of the above spectrum in the field as well as spectrum dump to a file for confirmation will be a part of the new ABR Release Procedure Version 1.99. This will be in addition to the currently followed release steps, which include testing for random walk, snap-shot etc.

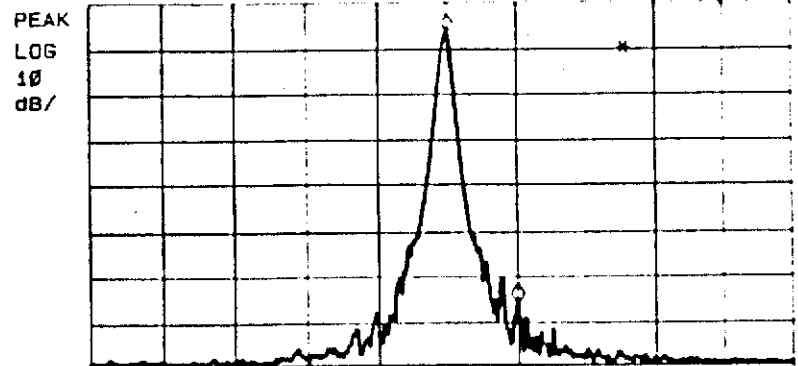
11:38:43 19 JUL 1996
 D46/126 120MHz/1 10:35:49 19 JUL 1996 MKR Δ 240.5 MHz
 REF 15.0 dBm AT 30 dB -5.88 dBm



Marker	Trace	Type	Freq / Time	Amplitude
1	(A)	Freq	119.5 MHz	6.22 dBm
2	(A)	Freq	240.5 MHz	-5.88 dBm
3	(A)	Freq	180.0 MHz	-57.24 dBm
4		Inactive		

CENTER 180.0 MHz SPAN 200.0 MHz
 RES BW 1.0 MHz VBW 300 kHz SWP 20.0 msec

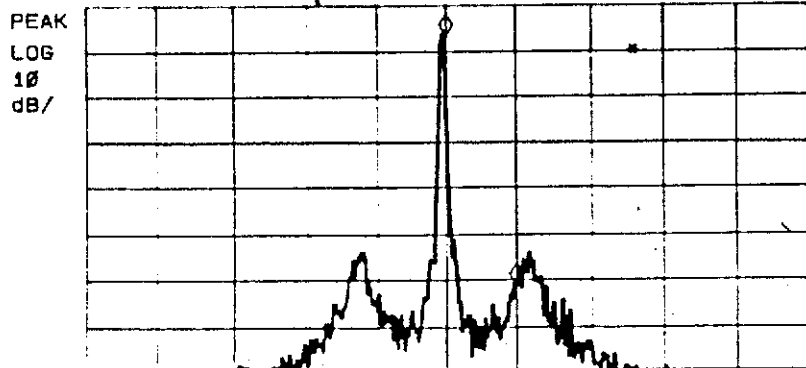
11:41:50 19 JUL 1996
 D46/126 120MHz/2 10:06:39 19 JUL 1996 MKR Δ 30.0 MHz
 REF 15.0 dBm AT 30 dB -59.34 dBm



Marker	Trace	Type	Freq / Time	Amplitude
1	(A)	Δ Freq	0.0000 MHz	-59.34 dBm
2	(A)	Δ Ref	120.0025 MHz	6.21 dBm
3		Inactive		
4		Inactive		

CENTER 120.0025 MHz SPAN 300.0 MHz
 RES BW 3.0 kHz VBW 3 kHz SWP 100 msec

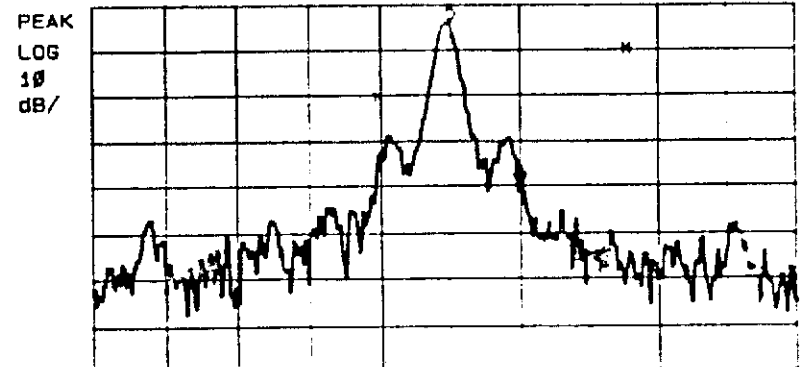
11:44:59 19 JUL 1996
 D46/126 120MHz/3 10:07:47 19 JUL 1996 MKR Δ 10.0 kHz
 REF 15.0 dBm AT 30 dB -54.35 dBm



Marker	Trace	Type	Freq / Time	Amplitude
1	(A)	Δ Freq	0.0100 MHz	-54.35 dBm
2	(A)	Δ Ref	120.0000 MHz	6.25 dBm
3		Inactive		
4		Inactive		

CENTER 120.0000 MHz SPAN 100.0 kHz
 RES BW 300 Hz VBW 300 Hz SWP 3.33 sec

11:49:22 19 JUL 1996
 D46/126 120MHz/4 10:09:22 19 JUL 1996 MKR Δ 50 Hz
 REF 15.0 dBm AT 30 dB -35.67 dBm

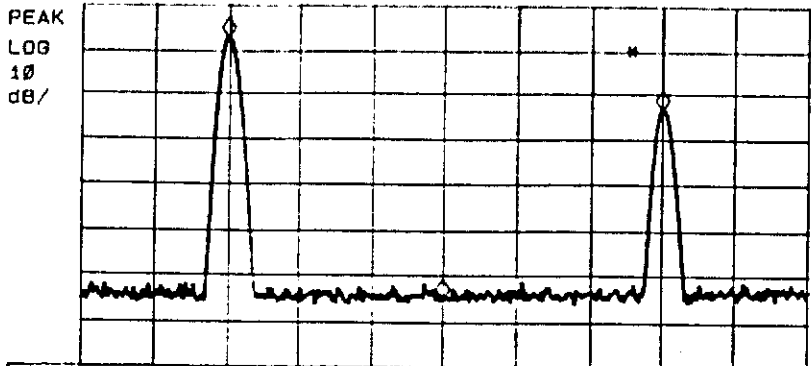


Marker	Trace	Type	Freq / Time	Amplitude
1	(A)	Δ Freq	0.000500 MHz	-35.68 dBm
2	(A)	Δ Ref	120.000230 MHz	10.45 dBm
3		Inactive		
4		Inactive		

CENTER 120.000230 MHz SPAN 500 Hz
 RES BW 10 Hz VBW 10 Hz SWP 15.0 sec

11:52:57 19 JUL 1996

D46/126 150MHz : 10:10:49 19 JUL 1996 MKR 225.0 MHz
REF 15.0 dBm AT 30 dB -50.22 dBm

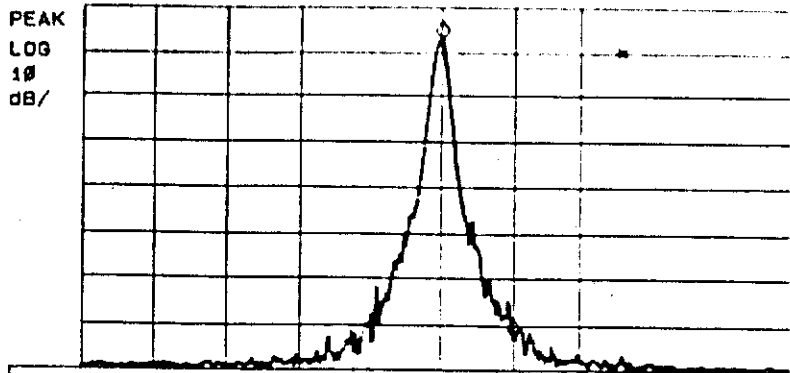


Marker	Trace Type	Freq / Time	Amplitude
1:	(A) Freq	149.4 MHz	7.74 dBm
2:	(A) Freq	300.0 MHz	-8.65 dBm
3:	(A) Freq	225.0 MHz	-50.22 dBm
4:	Inactive		

CENTER 225.0 MHz SPAN 250.0 MHz
RES BW 3.0 MHz VBW 1 MHz SWP 20.0 msec

11:58:31 19 JUL 1996

D46/126 150MHz/2 10:10:37 19 JUL 1996 MKR 150.0 MHz
REF 15.0 dBm AT 30 dB -55.74 dBm

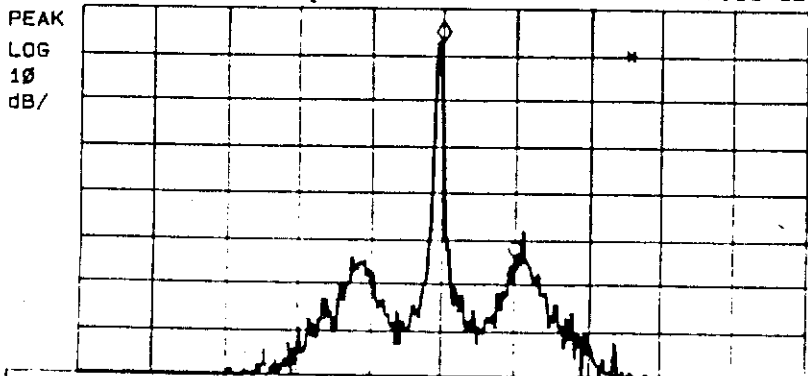


Marker	Trace Type	Freq / Time	Amplitude
1:	(A) ΔFreq	0.0300 MHz	-55.74 dB
2:	(A) Δ Ref	150.0025 MHz	7.67 dBm
3:	Inactive		
4:	Inactive		

CENTER 150.0025 MHz SPAN 50.0 MHz
RES BW 3.0 kHz VBW 3 kHz SWP 10.0 msec

12:01:29 19 JUL 1996

D46/126 150MHz : 10:12:55 19 JUL 1996 MKR Δ 10.0 kHz
REF 15.0 dBm AT 30 dB -47.18 dB

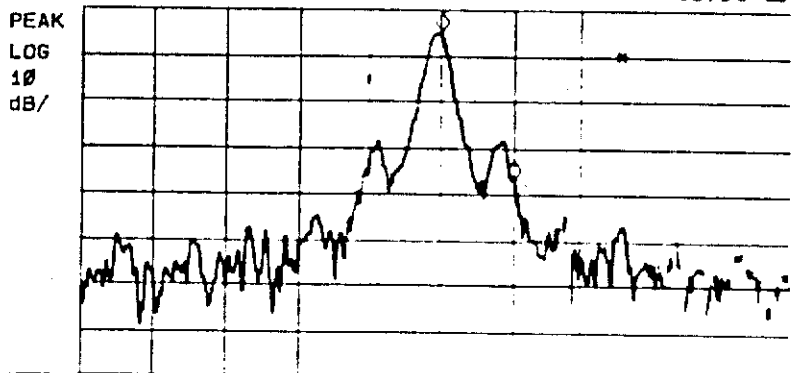


Marker	Trace Type	Freq / Time	Amplitude
1:	(A) ΔFreq	0.0100 MHz	-47.18 dB
2:	(A) Δ Ref	150.0000 MHz	7.75 dBm
3:	Inactive		
4:	Inactive		

CENTER 150.0000 MHz SPAN 100.0 kHz
RES BW 300 Hz VBW 300 Hz SWP 3.00 msec

12:04:37 19 JUL 1996

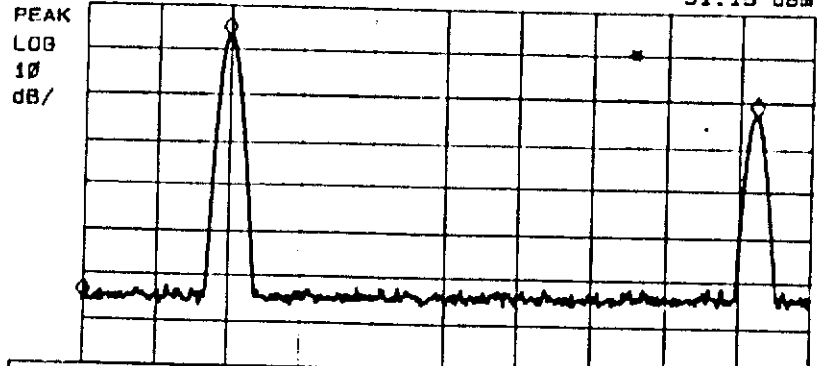
D46/126 150MHz/4 10:14:51 19 JUL 1996 MKR Δ 50.0 kHz
REF 15.0 dBm AT 30 dB -32.05 dB



Marker	Trace Type	Freq / Time	Amplitude
1:	(A) ΔFreq	0.000000 MHz	-32.05 dB
2:	(A) Δ Ref	150.000044 MHz	10.00 dBm
3:	Inactive		
4:	Inactive		

CENTER 150.000044 MHz SPAN 100.0 kHz
RES BW 10 Hz VBW 10 Hz SWP 1.00 msec

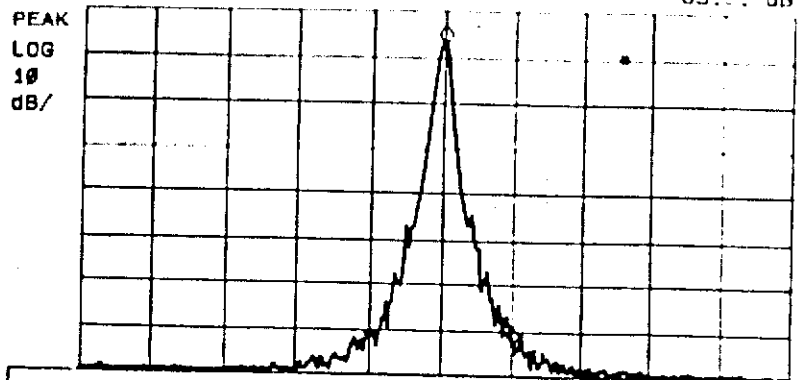
046/126 180MHz/1 10:17:39 19 JUL 1996 MKR Δ 130.0 kHz
 REF 15.0 dBm AT 30 dB -51.15 dBm



Marker	Trace Type	Freq / Time	Amplitude
1:	(A) Freq	179.4 MHz	7.56 dBm
2:	(A) Freq	300.0 MHz	-8.25 dBm
3:	(A) Freq	130.0 MHz	-51.15 dBm
4:	Inactive		

CENTER 255.0 MHz SPAN 250.0 MHz
 RES BW 3.0 MHz VBW 1 MHz SWP 20.0 msec

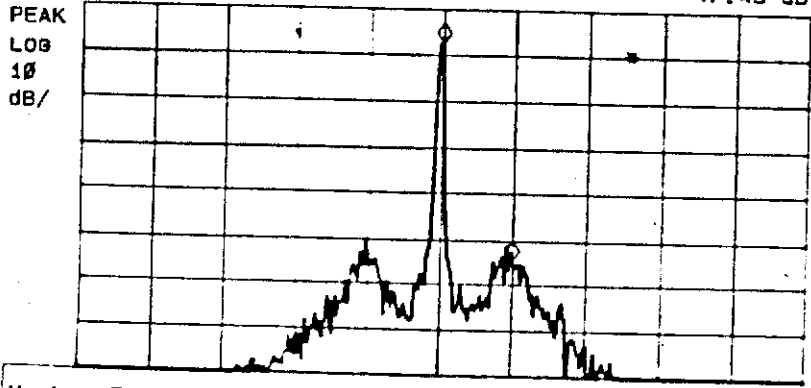
046/126 180MHz/2 10:17:51 19 JUL 1996 MKR Δ 30.0 kHz
 REF 15.0 dBm AT 30 dB -65.61 dBm



Marker	Trace Type	Freq / Time	Amplitude
1:	(A) Δ Freq	0.0023 MHz	-65.61 dB
2:	(A) Δ Ref	100.0023 MHz	7.46 dBm
3:	Inactive		
4:	Inactive		

CENTER 100.0023 MHz SPAN 300.0 kHz
 RES BW 3.0 kHz VBW 3 kHz SWP 100 msec

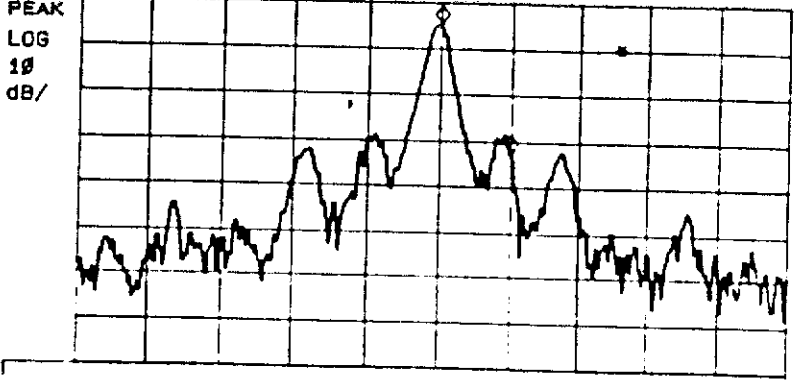
12:14:23 19 JUL 1996
 046/126 180MHz/3 10:19:36 19 JUL 1996 MKR Δ 10.0 kHz
 REF 15.0 dBm AT 30 dB -47.45 dBm



Marker	Trace Type	Freq / Time	Amplitude
1:	(A) Δ Freq	0.0100 MHz	-47.45 dB
2:	(A) Δ Ref	100.0000 MHz	7.66 dBm
3:	Inactive		
4:	Inactive		

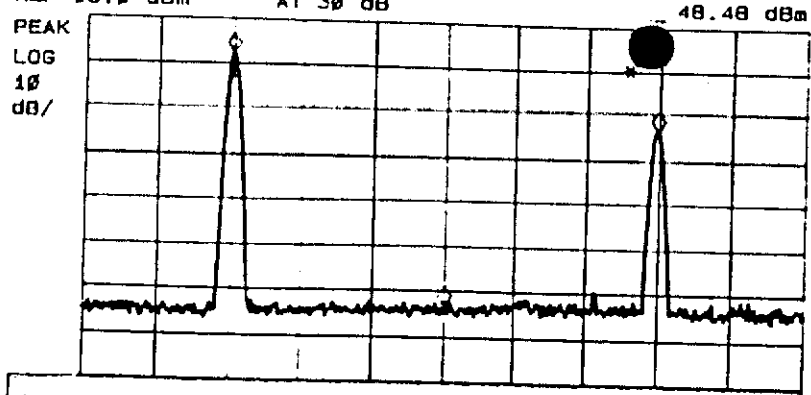
CENTER 100.0000 MHz SPAN 100.0 kHz
 RES BW 300 Hz VBW 300 Hz SWP 3.33 sec

12:17:38 19 JUL 1996
 046/126 180MHz/4 10:20:43 19 JUL 1996 MKR Δ 50 kHz
 REF 15.0 dBm AT 30 dB -27.85 dBm



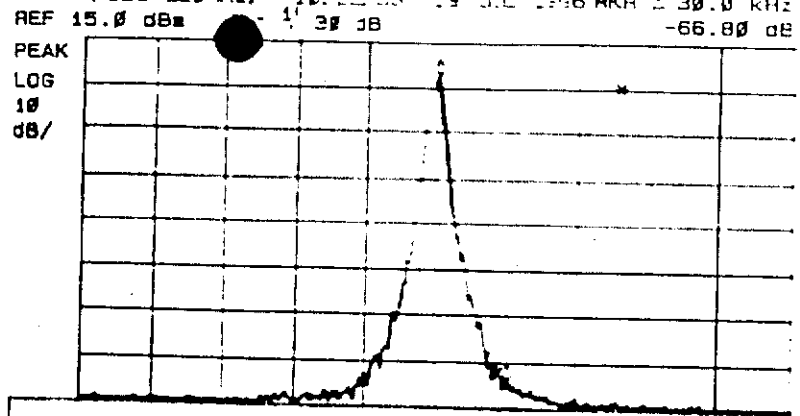
Marker	Trace Type	Freq / Time	Amplitude
1:	(A) Δ Freq	0.000599 MHz	-27.85 dB
2:	(A) Δ Ref	100.000599 MHz	9.79 dBm
3:	Inactive		
4:	Inactive		

CENTER 100.000599 MHz SPAN 500 Hz
 RES BW 10 Hz VBW 10 Hz SWP 15.0 sec



Marker	Trace Type	Freq / Time	Amplitude
1:	(A) Freq	219.0 MHz	7.89 dBm
2:	(A) Freq	448.1 MHz	-9.85 dBm
3:	(A) Freq	330.0 MHz	-48.48 dBm
4:	Inactive		

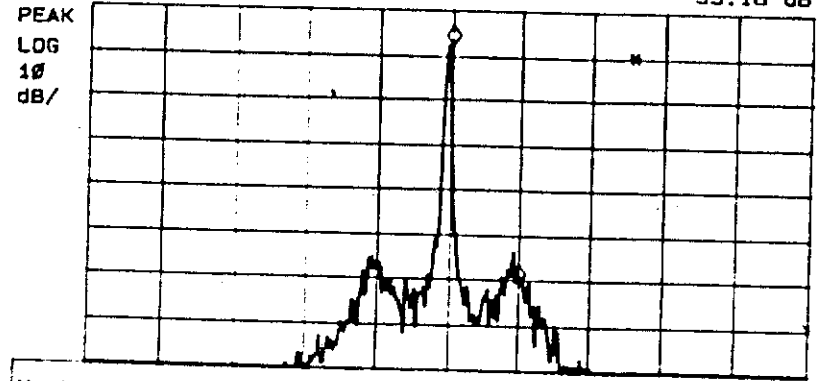
CENTER 330.0 MHz SPAN 370.0 MHz
 RES BW 3.0 MHz VBW 1 MHz SWP 20.0 msec



Marker	Trace Type	Freq / Time	Amplitude
1:	(A) Δ Freq	220.0 MHz	-56.80 dB
2:	(A) Δ Ref	220.0 MHz	7.95 dBm
3:	Inactive		
4:	Inactive		

CENTER 220.0025 MHz SPAN 300.0 kHz
 RES BW 3.0 kHz VBW 3 kHz SWP 100 msec

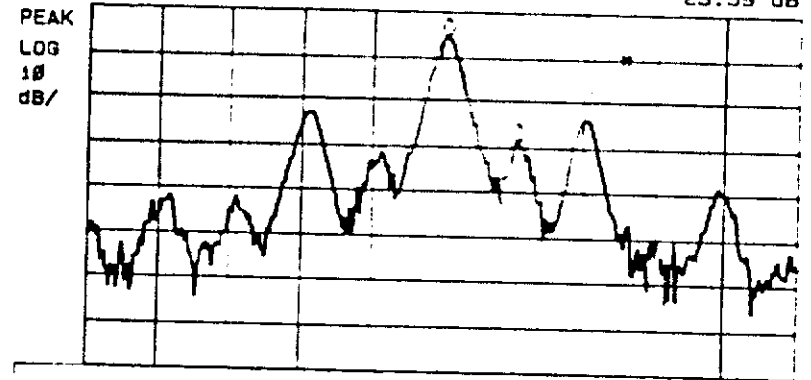
12:27:14 19 JUL 1996
 # D46/126 220MHz/3 10:24:11 19 JUL 1996 MKR Δ 10.0 kHz
 REF 15.0 dBm AT 30 dB -53.18 dB



Marker	Trace Type	Freq / Time	Amplitude
1:	(A) Δ Freq	220.0000 MHz	-53.18 dB
2:	(A) Δ Ref	220.0000 MHz	7.11 dBm
3:	Inactive		
4:	Inactive		

CENTER 220.0000 MHz SPAN 100.0 kHz
 RES BW 300 Hz VBW 300 Hz SWP 3.33 sec

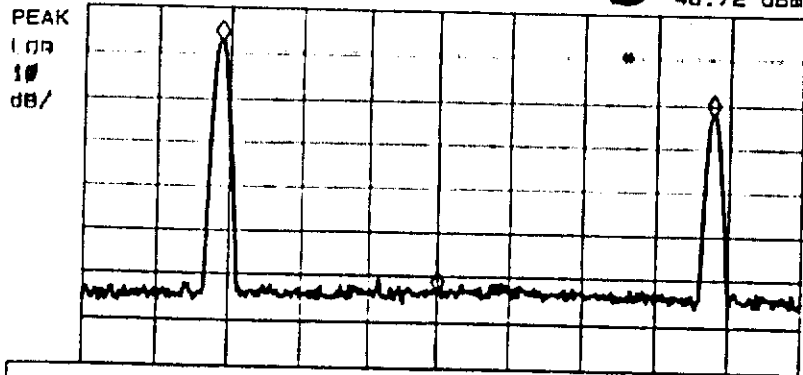
12:30:23 19 JUL 1996
 # D46/126 220MHz/4 10:27:10 19 JUL 1996 MKR Δ 42 Hz
 REF 15.0 dBm AT 30 dB -23.59 dB



Marker	Trace Type	Freq / Time	Amplitude
1:	(A) Δ Freq	220.0000 MHz	-23.59 dB
2:	(A) Δ Ref	220.0000 MHz	7.32 dBm
3:	Inactive		
4:	Inactive		

CENTER 220.0000 MHz SPAN 500 kHz
 RES BW 10 Hz VBW 10 Hz SWP 15.0 sec

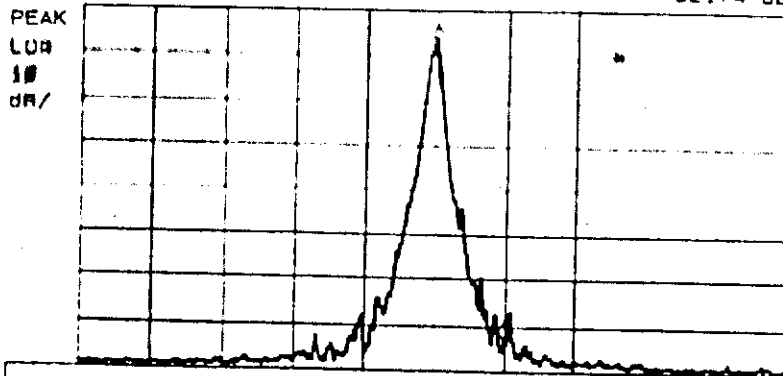
12:37:02 19 JUL 1996
 D46/126 255MHz/1 10:29:52 19 JUL 1996 MKR Δ 370.0 MHz
 REF 15.0 dBm AT 30 dB -48.72 dBm



Marker	Trace Type	Freq / Time	Amplitude
1:	(A) Freq	254.4 MHz	7.28 dBm
2:	(A) Freq	379.7 MHz	-7.35 dBm
3:	(A) Freq	379.7 MHz	-48.72 dBm
4:	Inactive		

CENTER 370.0 MHz SPAN 370.0 MHz
 RES BW 3.0 MHz VBW 1 MHz SWP 20.0 msec

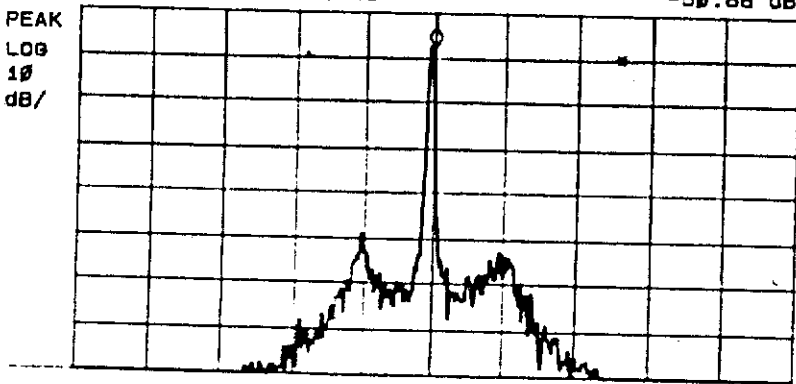
12:37:02 19 JUL 1996
 D46/126 255MHz/2 10:30:44 19 JUL 1996 MKR Δ 30.0 kHz
 REF 15.0 dBm AT 30 dB -65.74 dBm



Marker	Trace Type	Freq / Time	Amplitude
1:	(A) Δ Freq	0.0300 MHz	-65.74 dB
2:	(A) Δ Ref	255.0025 MHz	7.30 dBm
3:	Inactive		
4:	Inactive		

CENTER 255.0025 MHz SPAN 300.0 kHz
 RES BW 3.0 kHz VBW 3 kHz SWP 100 msec

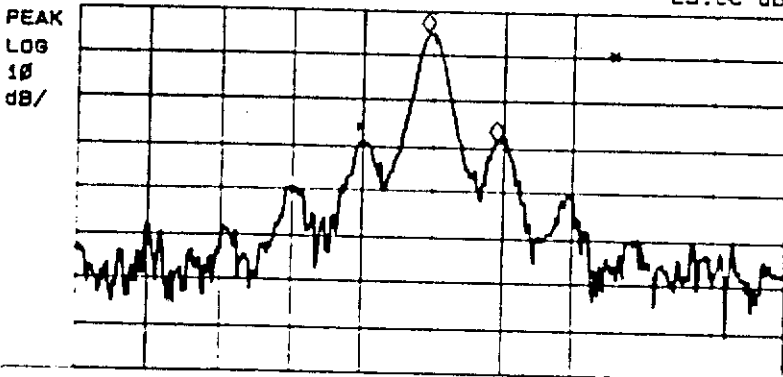
12:40:03 19 JUL 1996
 D46/126 255MHz/3 10:31:34 19 JUL 1996 MKR Δ 10.0 kHz
 REF 15.0 dBm AT 30 dB -50.88 dBm



Marker	Trace Type	Freq / Time	Amplitude
1:	(A) Δ Freq	0.0100 MHz	-50.88 dB
2:	(A) Δ Ref	255.0008 MHz	7.51 dBm
3:	Inactive		
4:	Inactive		

CENTER 255.0008 MHz SPAN 100.0 kHz
 RES BW 300 Hz VBW 300 Hz SWP 3.33 sec

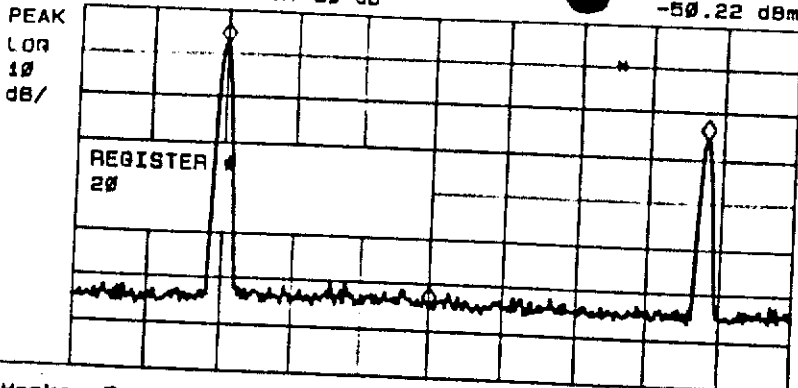
12:43:28 19 JUL 1996
 D46/126 255MHz/4 10:34:13 19 JUL 1996 MKR Δ 56 Hz
 REF 15.0 dBm AT 30 dB -23.86 dBm



Marker	Trace Type	Freq / Time	Amplitude
1:	(A) Δ Freq	0.0001370 MHz	-23.86 dB
2:	(A) Δ Ref	255.0001370 MHz	9.96 dBm
3:	Inactive		
4:	Inactive		

CENTER 255.000142 MHz SPAN 500 Hz
 RES BW 10 Hz VBW 10 Hz SWP 15.2 sec

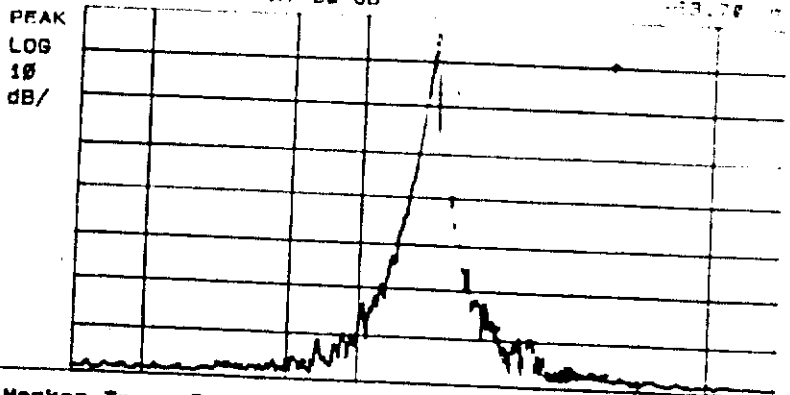
12:54:22 19 JUL 1996
 D46/128 305MHz/1 10:30:27 19 JUL 1996 MKH 440.0 MHz
 REF 15.0 dBm AT 30 dB -50.22 dBm



Marker	Trace Type	Freq / Time	Amplitude
1:	(A) Freq	305.0 MHz	7.31 dBm
2:	(A) Freq	800.9 MHz	-11.13 dBm
3:	(A) Freq	440.0 MHz	-50.22 dBm
4:	Inactive		

CENTER 440.0 MHz
 RES BW 3.0 MHz VBW 1 MHz SPAN 450.0 MHz SWP 20.0 msec

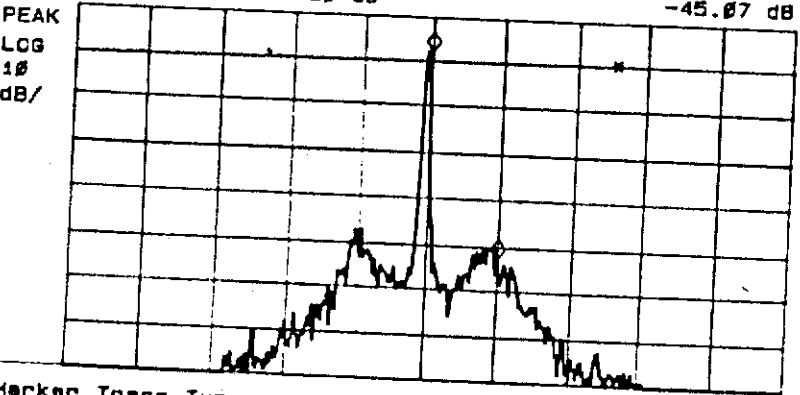
12:58:40 19 JUL 1996
 D46/128 305MHz/2 10:36:58 19 JUL 1996 MKH 305.0 MHz
 REF 15.0 dBm AT 30 dB -25.27 dBm



Marker	Trace Type	Freq / Time	Amplitude
1:	(A) Δ Freq	0.0300 MHz	-25.27 dBm
2:	(A) Δ Ref	305.0000 MHz	7.31 dBm
3:	Inactive		
4:	Inactive		

CENTER 305.0023 MHz
 RES BW 3.0 kHz VBW 3 kHz SPAN 300.0 kHz SWP 1.0 msec

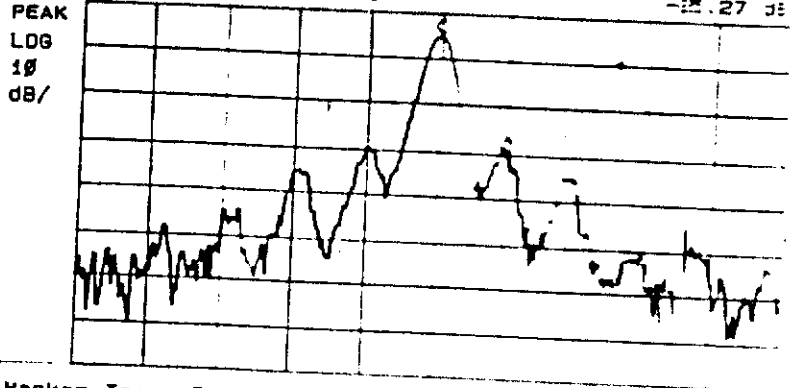
12:54:22 19 JUL 1996
 D46/128 305MHz/3 10:37:33 19 JUL 1996 MKR Δ 10.0 kHz
 REF 15.0 dBm AT 30 dB -45.07 dBm



Marker	Trace Type	Freq / Time	Amplitude
1:	(A) Δ Freq	0.0100 MHz	-45.07 dB
2:	(A) Δ Ref	305.0008 MHz	7.21 dBm
3:	Inactive		
4:	Inactive		

CENTER 305.0008 MHz
 RES BW 300 Hz VBW 300 Hz SPAN 100.0 kHz SWP 3.33 msec

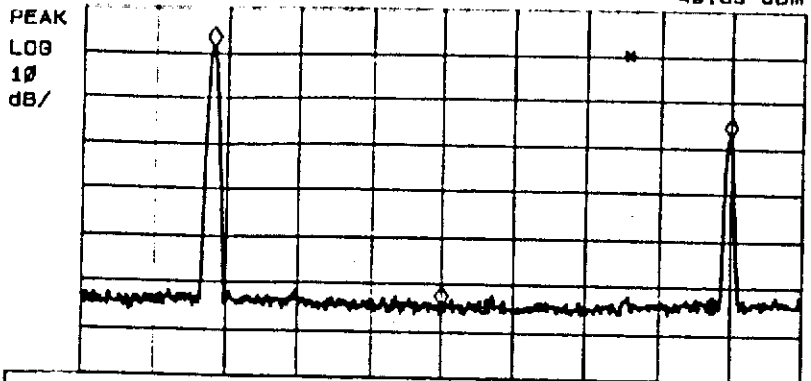
12:57:27 19 JUL 1996
 D46/128 305MHz/4 10:38:58 19 JUL 1996 MKR Δ 50.0 kHz
 REF 15.0 dBm AT 30 dB -25.27 dBm



Marker	Trace Type	Freq / Time	Amplitude
1:	(A) Δ Freq	0.0001 MHz	-25.27 dBm
2:	(A) Δ Ref	305.0010 MHz	7.31 dBm
3:	Inactive		
4:	Inactive		

CENTER 305.0010 MHz
 RES BW 10 Hz VBW 10 Hz SPAN 100.0 kHz SWP 1.0 msec

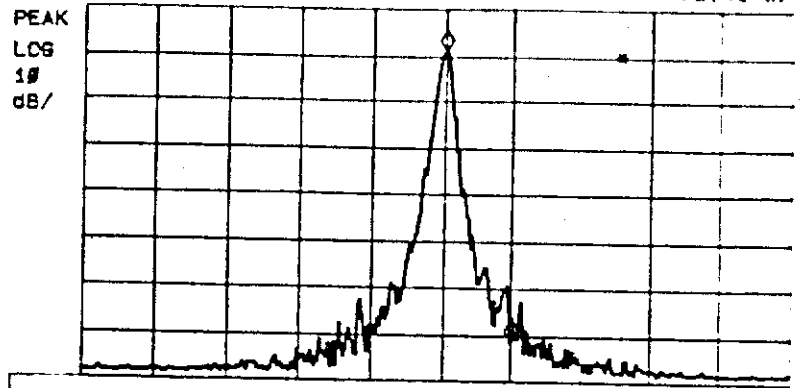
13:57:55 19 JUL 1996
 D46/126 395MHz/1 10:40:15 19 JUL 1996 MKR 570.0 MHz
 REF 15.0 dBm AT 30 dB -49.85 dBm



Marker	Trace Type	Freq / Time	Amplitude
1:	(A) Freq	394.0 MHz	6.95 dBm
2:	(A) Freq	790.0 MHz	-12.95 dBm
3:	(A) Freq	570.0 MHz	-49.85 dBm
4:	Inactive		

CENTER 570.0 MHz SPAN 550.0 MHz
 RES BW 3.0 MHz VBW 1 MHz SWP 20.0 msec

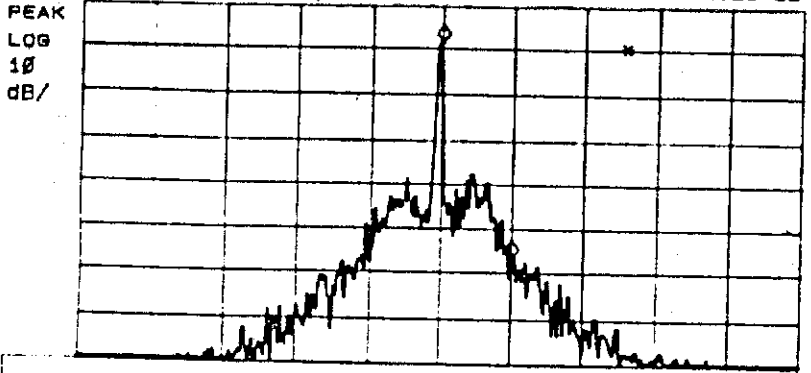
14:01:01 19 JUL 1996
 D46/126 395MHz/2 10:41:05 19 JUL 1996 MKR 395.0 kHz
 REF 15.0 dBm AT 30 dB -52.41 dBm



Marker	Trace Type	Freq / Time	Amplitude
1:	(A) ΔFreq	0.0000 MHz	-52.41 dB
2:	(A) Δ Ref	395.0023 MHz	5.97 dBm
3:	Inactive		
4:	Inactive		

CENTER 395.0023 MHz SPAN 300.0 kHz
 RES BW 3.0 kHz VBW 3 kHz SWP 100 msec

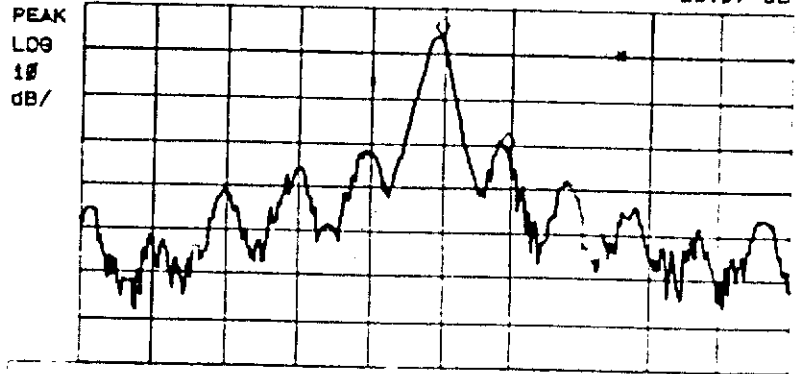
14:04:03 19 JUL 1996
 D46/126 395MHz/3 10:41:40 19 JUL 1996 MKR 395.0 kHz
 REF 15.0 dBm AT 30 dB -48.28 dBm



Marker	Trace Type	Freq / Time	Amplitude
1:	(A) ΔFreq	0.0000 MHz	-48.28 dB
2:	(A) Δ Ref	395.0000 MHz	6.05 dBm
3:	Inactive		
4:	Inactive		

CENTER 395.0000 MHz SPAN 100.0 kHz
 RES BW 300 Hz VBW 300 Hz SWP 3.33 sec

14:07:09 19 JUL 1996
 D46/126 395MHz/4 10:43:49 19 JUL 1996 MKR 395.0 kHz
 REF 15.0 dBm AT 30 dB -25.07 dBm



Marker	Trace Type	Freq / Time	Amplitude
1:	(A) ΔFreq	0.0000000 MHz	-25.07 dB
2:	(A) Δ Ref	395.00216 MHz	3.37 dBm
3:	Inactive		
4:	Inactive		

CENTER 395.00216 MHz SPAN 500 Hz
 RES BW 10 Hz VBW 10 Hz SWP 15.0 sec

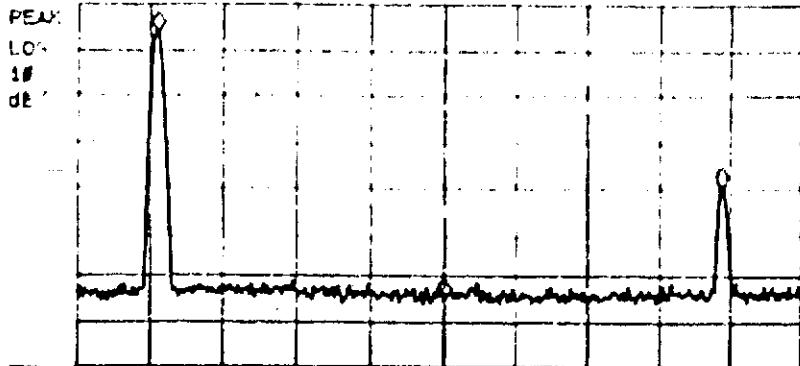
SR 37:06 12 AUG 1996

F 047/127 350MHz/1

REF 15.0 dBm AT 30 dB

MKR 525.0 MHz

-50.11 dBm



Marker	Trace Type	Freq / Time	Amplitude
1:	(A) Freq	349.5 MHz	8.71 dBm
2:	(A) Freq	525.0 MHz	-50.11 dBm
3:	(A) Freq	525.0 MHz	-50.11 dBm
4:	Inactive		

CENTER 525.0 MHz SPAN 450.0 MHz
 RES BW 3.0 MHz VBW 1 MHz SWP 20.0 msec

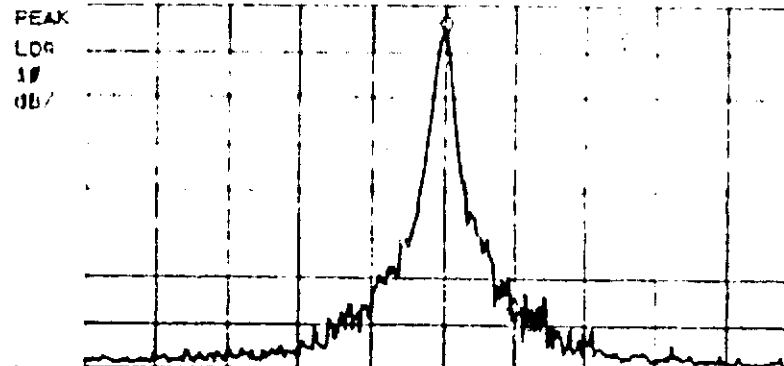
SR 32:42 12 AUG 1996

F 047/127 350MHz/2

REF 15.0 dBm AT 30 dB

MKR Δ 30.0 kHz

-52.55 dBm



Marker	Trace Type	Freq / Time	Amplitude
1:	(A) Δ Freq	0.0000 MHz	-52.55 dBm
2:	(A) Δ Ref	350.0025 MHz	8.67 dBm
3:	Inactive		
4:	Inactive		

CENTER 350.0025 MHz SPAN 300.0 kHz
 RES BW 3.0 kHz VBW 3 kHz SWP 100 msec

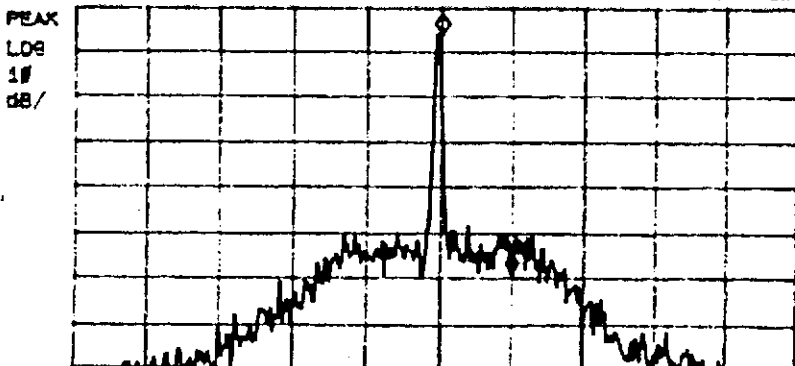
SR 41:55 12 AUG 1996

F 047/127 350MHz/3

REF 15.0 dBm AT 30 dB

MKR Δ 10.0 kHz

-52.89 dBm



Marker	Trace Type	Freq / Time	Amplitude
1:	(A) Δ Freq	0.0100 MHz	-52.89 dBm
2:	(A) Δ Ref	350.0000 MHz	8.76 dBm
3:	Inactive		
4:	Inactive		

CENTER 350.0000 MHz SPAN 100.0 kHz
 RES BW 300 Hz VBW 300 Hz SWP 9.33 msec

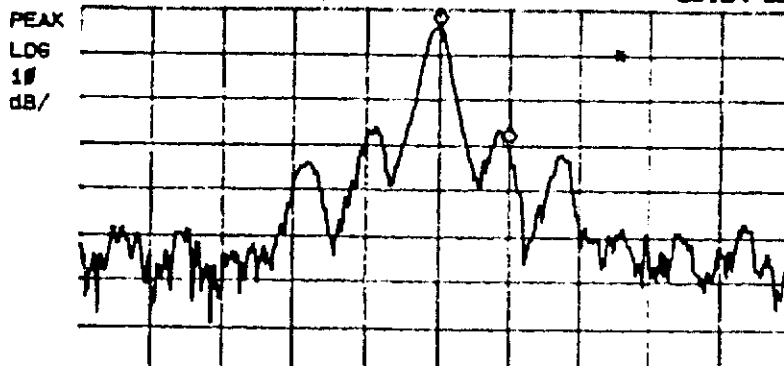
SR 40:20 12 AUG 1996

F 047/127 350MHz/4

REF 15.0 dBm AT 30 dB

MKR Δ 50 Hz

-26.24 dBm

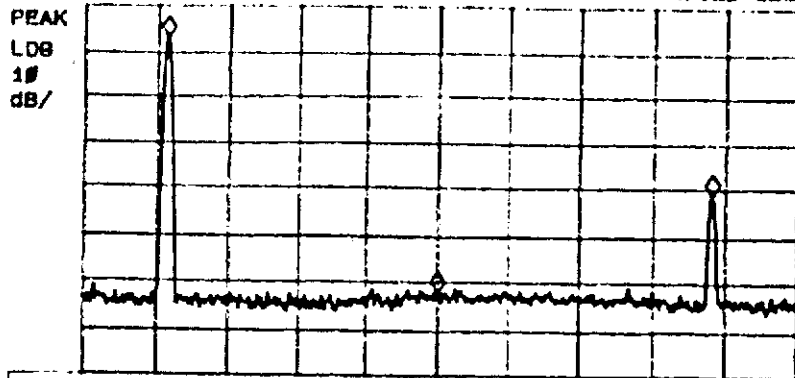


Marker	Trace Type	Freq / Time	Amplitude
1:	(A) Δ Freq	0.0000500 MHz	-26.24 dBm
2:	(A) Δ Ref	350.0001870 MHz	17.86 dBm
3:	Inactive		
4:	Inactive		

CENTER 350.000187 MHz SPAN 500 Hz
 RES BW 10 Hz VBW 10 Hz SWP 15.0 msec

SR: 51:29 12 AUG 1996
 P D47/127 540MHz/1
 REF 15.0 dBm AT 30 dB

MCR 810.0 MHz
 -47.20 dBm

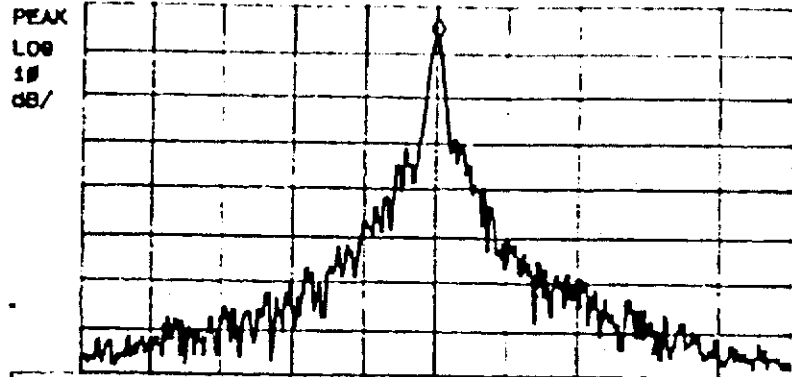


Marker	Trace Type	Freq / Time	Amplitude
1:	(A) Freq	638.7 MHz	8.96 dBm
2:	(A) Freq	1077.8 MHz	-26.22 dBm
3:	(A) Freq	810.0 MHz	-47.20 dBm
4:	Inactive		

CENTER 810.0 MHz SPAN 700.0 MHz
 RES BW 3.0 MHz VBW 1 MHz SWP 20.0 msec

SR: 54:54 12 1996
 P D47/127 540MHz/2
 REF 15.0 dBm AT 30 dB

MCR 540.0 MHz
 -49.80 dB

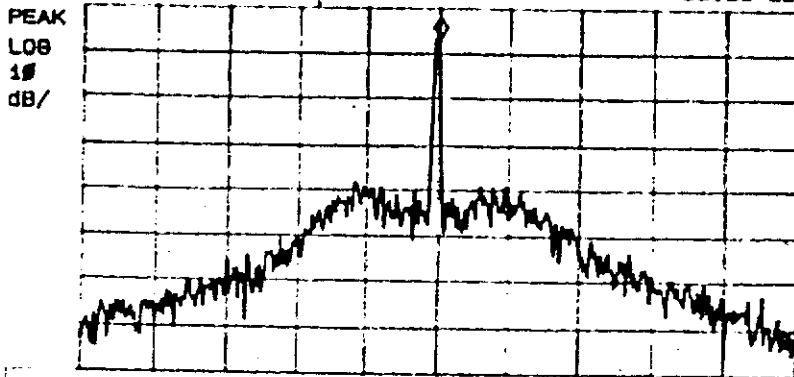


Marker	Trace Type	Freq / Time	Amplitude
1:	(A) Δ Freq	5.3300 MHz	-49.80 dB
2:	(A) Δ Ref	540.0000 MHz	9.96 dBm
3:	Inactive		
4:	Inactive		

CENTER 540.0000 MHz SPAN 300.0 MHz
 RES BW 3.0 kHz VBW 3 kHz SWP 100 msec

SR: 58:58 12 AUG 1996
 P D47/127 540MHz/3
 REF 15.0 dBm AT 30 dB

MCR 540.0 MHz
 -39.59 dB

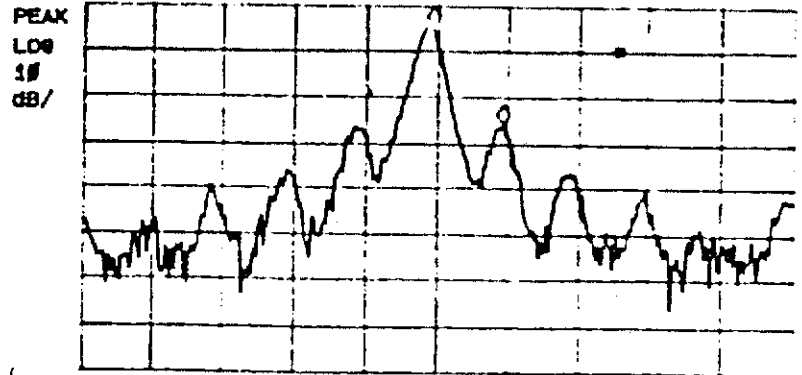


Marker	Trace Type	Freq / Time	Amplitude
1:	(A) Δ Freq	2.3100 MHz	-39.59 dB
2:	(A) Δ Ref	540.0000 MHz	9.21 dBm
3:	Inactive		
4:	Inactive		

CENTER 540.0000 MHz SPAN 100.0 MHz
 RES BW 300 Hz VBW 300 Hz SWP 3.33 sec

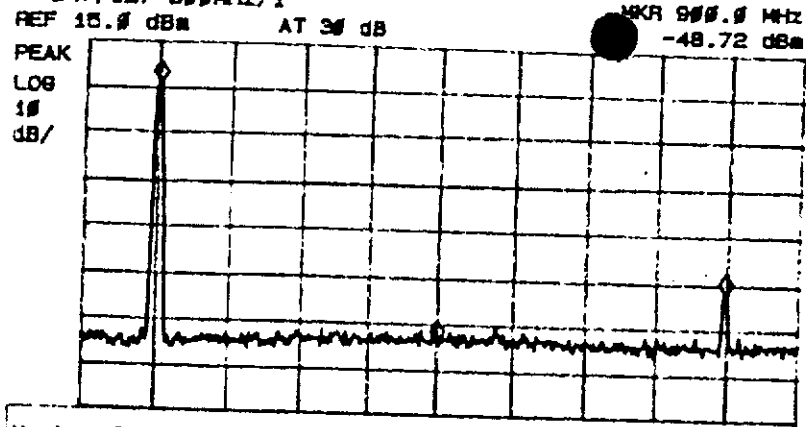
SR: 52:53 12 AUG 1996
 P D47/127 540MHz/4
 REF 15.0 dBm AT 30 dB

MCR 540.0 MHz
 -21.34 dB



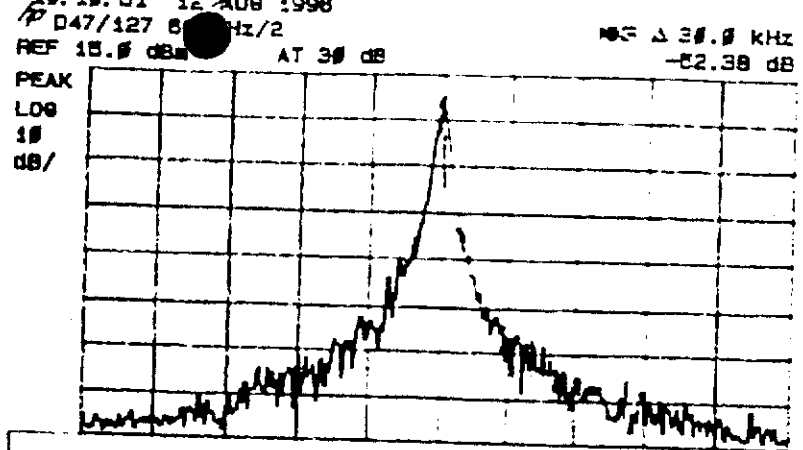
Marker	Trace Type	Freq / Time	Amplitude
1:	(A) Δ Freq	2.2222500 MHz	-21.34 dB
2:	(A) Δ Ref	540.000000 MHz	18.37 dBm
3:	Inactive		
4:	Inactive		

CENTER 540.000000 MHz SPAN 500 Hz
 RES BW 10 Hz VBW 10 Hz SWP 15.2 sec



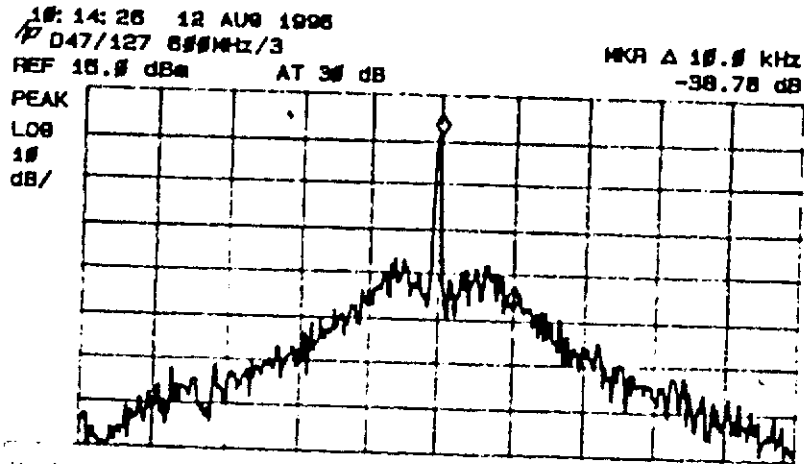
Marker	Trace Type	Freq / Time	Amplitude
1:	(A) Freq	999.0 MHz	6.15 dBm
2:	(A) Freq	1199.1 MHz	-37.21 dBm
3:	(A) Freq	999.0 MHz	-48.72 dBm
4:	Inactive		

CENTER 999.0 MHz SPAN 750.0 MHz
RES BW 3.0 MHz VBW 1 MHz BWP 20.0 msec



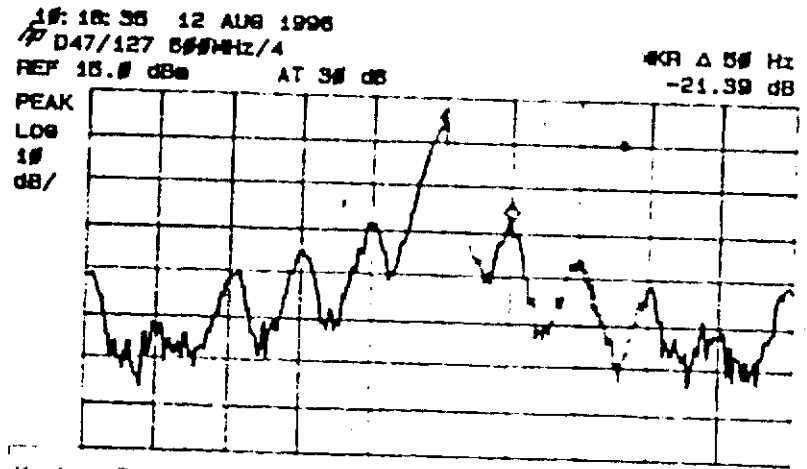
Marker	Trace Type	Freq / Time	Amplitude
1:	(A) Δ Freq	600.0025 MHz	-22.38 dB
2:	(A) Δ Ref	600.0025 MHz	6.02 dBm
3:	Inactive		
4:	Inactive		

CENTER 600.0025 MHz SPAN 300.0 kHz
RES BW 3.0 kHz VBW 1 kHz BWP 100 msec



Marker	Trace Type	Freq / Time	Amplitude
1:	(A) Δ Freq	600.0000 MHz	-38.78 dB
2:	(A) Δ Ref	600.0000 MHz	6.28 dBm
3:	Inactive		
4:	Inactive		

CENTER 600.0000 MHz SPAN 100.0 kHz
RES BW 300 Hz VBW 300 Hz BWP 3.33 sec



Marker	Trace Type	Freq / Time	Amplitude
1:	(A) Δ Freq	600.000000 MHz	-21.39 dB
2:	(A) Δ Ref	600.000000 MHz	6.04 dBm
3:	Inactive		
4:	Inactive		

CENTER 600.000000 MHz SPAN 50.0 Hz
RES BW 10 Hz VBW 10 Hz BWP 15.0 sec